



INDEMAT

INVESTIGACIÓN Y DESARROLLO DE
MATERIALES TECNOLÓGICOS

GRP flanges

GRP flanges

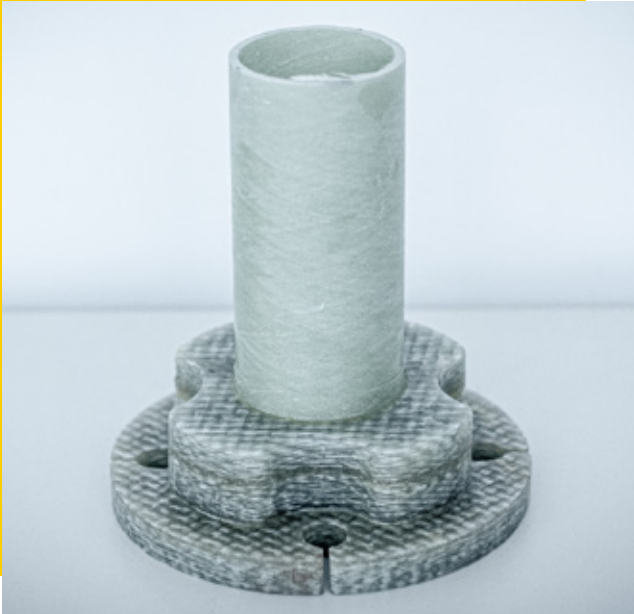
Composite flanges. Epoxy flange sleeve, isophthalic flange (optional vinylester).

The flanges have been manufactured according to DIN EN 1092 pressure PN10 and ASME/ANSI pressure 150 lb. using a machining process by water cutting machine preserving the properties of the material.

Advantages

- High mechanical strength.
- UV resistant.
- Combination of DIN and ANSI/ASME standards.
- Corrosion resistant.
- High chemical resistance.
- Flatness guaranteed by the shrinkage-free process.
- Pre-polished surfaces for painting/adhesive coating.
- Translucent colour.

GRP flange types



Flanges



Blind flanges

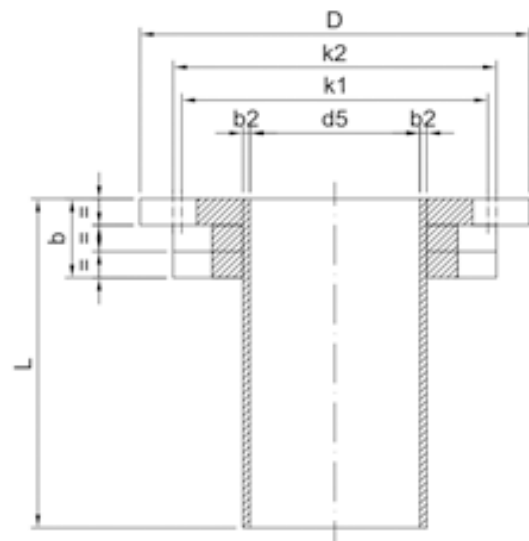
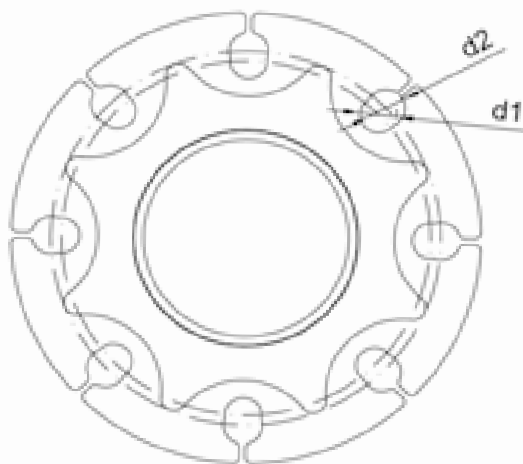


Loose flanges

Flanges

GRP FLANGES IN 1092 - ASME 150

DN	Pressure	Thickness of flange sleeve	Thickness of flange	Thickness of the flange+ reinforcement	No. boreholes	Borehole diameter		Borehole centre diameter		Flange outside diameter	Sleeve length	Price
						mm DIN	mm (in.) ANSI	mm DIN	mm (in.) ANSI			
mm (in.)	bar	mm (in.)	mm (in.)	mm (in.)	ud	d1	d2	k1	k2	D	L	€
D		b2	b II	b		d1	d2	k1	k2	D	L	
32 (1 ½)	6	4 (1/8)	16 (0.63)	48 (1.89)	4	18	16 (5/8)	100	89 (3.5)	140 (5.5)	250	27
40 (1 ½)	6	4 (1/8)	16 (0.63)	48 (1.89)	4	18	16 (5/8)	110	98 (3.9)	150 (5.9)	250	30,8
50 (2)	6	4 (1/8)	16 (0.63)	48 (1.89)	4	18	19 (3/4)	125	121 (4.8)	165 (6.5)	250	40,4
65 (2 ½)	4	4 (1/8)	16 (0.63)	48 (1.89)	4	18	19 (3/4)	145	140 (5.5)	185 (7.3)	250	49,1
80 (3)	4	4 (1/8)	16 (0.63)	48 (1.89)	8	18	19 (3/4)	160	152 (6)	200 (7.9)	250	59,7
100 (4)	4	4 (1/8)	16 (0.63)	48 (1.89)	8	18	19 (3/4)	180	191 (7.5)	229 (9)	250	79
125 (5)	1	4 (1/8)	16 (0.63)	48 (1.89)	8	18	22 (7/8)	210	216 (8.5)	250 (9.8)	250	95,3
150 (6)	1	4 (1/8)	16 (0.63)	48 (1.89)	8	22	22 (7/8)	240	241 (9.5)	285 (11.2)	250	94,7
200 (8)	1	4 (1/8)	16 (0.63)	48 (1.89)	8	22	22 (7/8)	295	298 (11.7)	340 (13.4)	250	118,8
250 (10)	1	4 (1/8)	16 (0.63)	48 (1.89)	12	22	25 (1)	350	362 (14.2)	406 (16)	250	155,7
300 (12)	1	4 (1/8)	16 (0.63)	48 (1.89)	12	22	25 (1)	400	432 (17)	483 (19)	250	195,8
400	1	4 (1/8)	16 (0.63)	48 (1.89)	16	26	29 (1.14)	515	540 (21.26)	597 (23.5)	250	291,1



Flanges

PN10

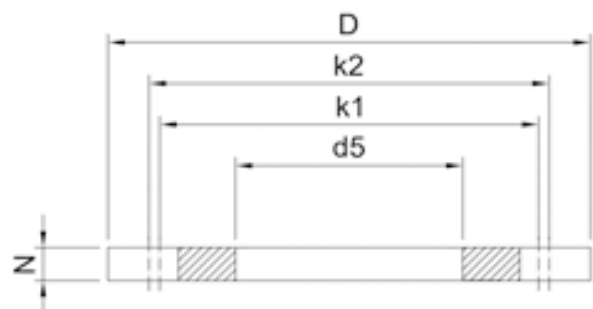
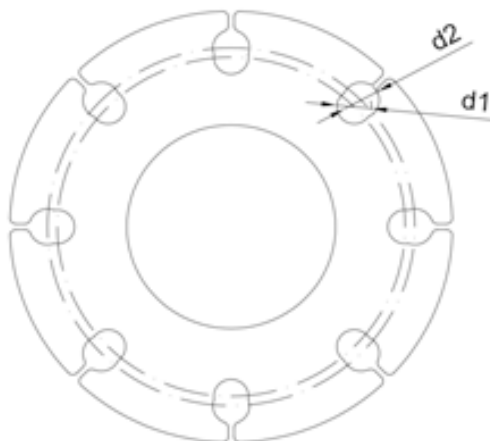
GRP FLANGES IN 1092 - ASME 150

DN	Pressure	Thickness of flange sleeve	Thickness of flange	Thickness of the flange+ reinforcement	n.º boreholes	Borehole diameter		Borehole centre diameter		Flange outside diameter	Sleeve length	Price
						mm DIN	mm (in.) ANSI	mm DIN	mm (in.) ANSI			
mm (in.)	bar	mm (in.)	mm (in.)	mm (in.)	ud	d1	d2	k1	k2	D	L	€
D		b2	b II	b		d1	d2	k1	k2	D	L	
32 (1 ¼)	10	4 (1/8)	20 (0.79)	52 (2)	4	18	16 (5/8)	100	89 (3.5)	140 (5.5)	250	28,1
40 (1 ½)	10	4 (1/8)	20 (0.79)	52 (2)	4	18	16 (5/8)	110	98 (3.9)	150 (5.9)	250	32,8
50 (2)	10	4 (1/8)	20 (0.79)	52 (2)	4	18	19 (¾)	125	121 (4.8)	165 (6.5)	250	43,2
65 (2 ½)	10	4 (1/8)	20 (0.79)	52 (2)	4	18	19 (¾)	145	140 (5.5)	185 (7.3)	250	51,9
80 (3)	10	4 (1/8)	20 (0.79)	52 (2)	8	18	19 (¾)	160	152 (6)	200 (7.9)	250	63,6
100 (4)	10	4 (1/8)	24 (0.95)	56 (2.2)	8	18	19 (¾)	180	191 (7.5)	229 (9)	250	88,7
125 (5)	6	4 (1/8)	24 (0.95)	56 (2.2)	8	18	22 (7/8)	210	216 (8.5)	250 (9.8)	250	105,1
150 (6)	6	4 (1/8)	24 (0.95)	56 (2.2)	8	22	22 (7/8)	240	241 (9.5)	285 (11.2)	250	126,9
200 (8)	4	4 (1/8)	24 (0.95)	56 (2.2)	8	22	22 (7/8)	295	298 (11.7)	340 (13.4)	250	160,2
250 (10)	2,5	4 (1/8)	24 (0.95)	56 (2.2)	12	22	25 (1)	350	362 (14.2)	406 (16)	250	221,5
300 (12)	1	4 (1/8)	24 (0.95)	56 (2.2)	12	22	25 (1)	400	432 (17)	483 (19)	250	273,6
400	1	4 (1/8)	24 (0.95)	56 (2.2)	16	26	29 (1.14)	515	540 (21.26)	597 (23.5)	250	402,5

Loose flanges

GRP LOOSE FLANGES FOR DIN/ANSI STEEL FLANGE HOLDERS

DN	Pressure	Thickness	n° boreholes	Borehole diameter		Borehole centre diameter		Flange inside diameter	Flange outside diameter	Price
				mm DIN	mm (in.) ANSI	mm DIN	mm (in.) ANSI			
mm (in.)	bar	mm (in.)	ud	d1	d2	K1	K2	d5	D	€
		N								
25 (1)	25	16 (0.63)	4	14	16 (5/8)	85	79 (3.1)	38 (1.5)	115 (4.5)	5,4
32 (1 ¼)	6	16 (0.63)	4	18	16 (5/8)	100	89 (3.5)	46 (1.8)	140 (5.5)	10,3
40 (1 ½)	6	16 (0.63)	4	18	16 (5/8)	110	98 (3.9)	53 (2)	150 (5.9)	10,4
50 (2)	6	16 (0.63)	4	18	19 (¾)	125	121 (4.8)	65 (2.5)	165 (6.5)	12,8
65 (2 ½)	6	16 (0.63)	4	18	19 (¾)	145	140 (5.5)	81 (3.2)	185 (7.3)	12,8
80 (3)	1	16 (0.63)	8	18	19 (¾)	160	152 (6)	94 (3.7)	200 (7.9)	15,2
100 (4)	1	16 (0.63)	8	18	19 (¾)	180	191 (7.5)	120 (4.7)	229 (9)	20,3
125 (5)	1	16 (0.63)	8	18	22 (7/8)	210	216 (8.5)	145 (5.7)	250 (9.8)	22,8
150 (6)	1	16 (0.63)	8	22	22 (7/8)	240	241 (9.5)	174 (6.85)	285 (11.2)	31,2
200 (8)	1	16 (0.63)	8	22	22 (7/8)	295	298 (11.7)	226 (8.9)	340 (13.4)	40
250 (10)	1	16 (0.63)	12	22	25 (1)	350	362 (14.2)	281 (11)	406 (16)	58,2
300 (12)	1	16 (0.63)	12	22	25 (1)	400	432 (17)	333 (13.1)	483 (19)	75,9
350 (14)	1	16 (0.63)	16	22	28 (1 1/8)	460	476 (18.7)	365 (14.4)	533 (21)	79
400 (16)	1	16 (0.63)	16	26	28 (1 1/8)	515	540 (21.3)	416 (16.4)	597 (23.5)	102,5
450 (18)	1	16 (0.63)	20	26	32 (1 ¼)	565	578 (22.8)	467 (18.4)	635 (25)	111,7
500 (20)	1	16 (0.63)	20	26	32 (1 ¼)	620	635 (25)	519 (20.4)	698 (27.5)	128,6
600 (24)	1	16 (0.63)	20	30	35 (1 3/8)	725	749 (29.5)	622 (24.5)	812 (32)	184,2



Loose flanges

GRP LOOSE FLANGES FOR FLANGES COVERS SOCKETS AND END PLATES

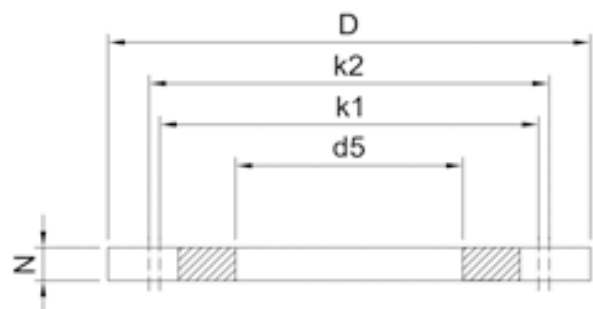
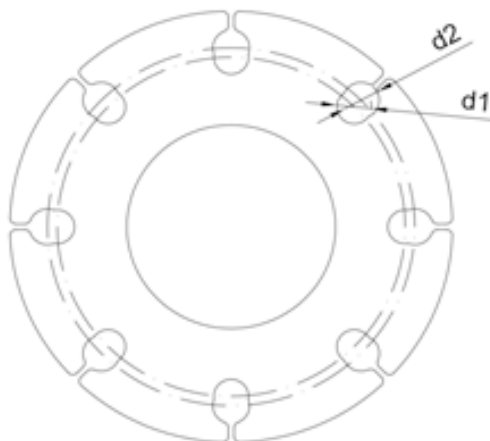
DN	Pressure	Thick-ness	n° boreholes	Borehole diameter		Borehole centre diameter		Flange inside diameter	Flange out-side diameter	Price
				mm DIN	mm (in.) ANSI	mm DIN	mm (in.) ANSI			
mm (in.)	bar	mm (in.)	ud	d1	d2	K1	K2	d5	D	€
GRP LOOSE FLANGES FOR FLANGES COVERS SOCKET/TESTA DIN/ANSI										
20 (1 ¼)	16	16 (0.63)	4	14	16 (5/8)	75	70 (2.8)	34 (1.4)	105 (4.1)	7,3
25 (1)	10	16 (0.63)	4	14	16 (5/8)	85	79 (3.1)	42 (1.7)	115 (4.5)	8,7
32 (1 ¼)	6	16 (0.63)	4	18	16 (5/8)	100	89 (3.5)	52 (2)	140 (5.5)	10,3
40 (1 ½)	6	16 (0.63)	4	18	16 (5/8)	110	98 (3.9)	63 (2.5)	150 (5.9)	11,1
50 (2)	6	16 (0.63)	4	18	19 (¾)	125	121 (4.8)	79 (3.1)	165 (6.5)	12,3
65 (2 ½)	6	16 (0.63)	4	18	19 (¾)	145	140 (5.5)	93 (3.7)	185 (7.3)	14,1
80 (3)	2,5	16 (0.63)	8	18	19 (¾)	160	152 (6)	111 (4.4)	200 (7.9)	16,6
GRP LOOSE FLANGES FOR FLANGES COVERS SOCKET DIN/ANSI										
100 (4)	1	16 (0.63)	8	18	19 (¾)	180	191 (7.5)	134 (5.3)	229 (9)	20,3
125 (5)	1	16 (0.63)	8	18	22 (7/8)	210	216 (8.5)	167 (6.6)	250 (9.8)	23,6
150 (6)	1	16 (0.63)	8	22	22 (7/8)	240	241 (9.5)	190 (7.5)	285 (11.2)	28,1
200 (8)	1	16 (0.63)	8	22	22 (7/8)	295	298 (11.7)	235 (9.3)	340 (13.4)	36,7
250 (10)	1	16 (0.63)	12	22	25 (1)	350	362 (14.2)	285 (11.2)	406 (16)	41,4
300 (12)	1	16 (0.63)	12	22	25 (1)	400	432 (17)	348 (13.7)	483 (19)	71,1
350 (14)	1	16 (0.63)	16	22	28 (1 1/8)	460	476 (18.7)	388 (15.3)	533 (21)	83,4
400 (16)	1	16 (0.63)	16	26	28 (1 1/8)	515	540 (21.3)	438 (17.2)	597 (23.5)	100
450 (18)	1	16 (0.63)	20	26	32 (1 ¼)	565	578 (22.8)	489 (19.3)	635 (25)	105,9
500 (20)	1	16 (0.63)	20	26	32 (1 ¼)	620	635 (25)	540 (21.3)	698 (27.5)	126,5
GRP LOOSE FLANGES FOR FLANGES COVERSTESTA DIN/ANSI										
100 (4)	1	16 (0.63)	8	18	19 (¾)	180	191 (7.5)	129 (5.1)	229 (9)	20,3
125 (5)	1	16 (0.63)	8	18	22 (7/8)	210	216 (8.5)	158 (6.2)	250 (9.8)	23,7
150 (6)	1	16 (0.63)	8	22	22 (7/8)	240	241 (9.5)	178 (7)	285 (11.2)	28,1
200 (8)	1	16 (0.63)	8	22	22 (7/8)	295	298 (11.7)	235 (9.3)	340 (13.4)	36,7
250 (10)	1	16 (0.63)	12	22	25 (1)	350	362 (14.2)	288 (11.3)	406 (16)	41,4
300 (12)	1	16 (0.63)	12	22	25 (1)	400	432 (17)	338 (13.3)	483 (19)	71,1
350 (14)	1	16 (0.63)	16	22	28 (1 1/8)	460	476 (18.7)	377 (14.8)	533 (21)	83,4
400 (16)	1	16 (0.63)	16	26	28 (1 1/8)	515	540 (21.3)	430 (16.9)	597 (23.5)	100

Loose flanges

PN10

GRP LOOSE FLANGES FOR DIN/ANSI STEEL FLANGE HOLDERS

DN	Pressure	Thickness	n° boreholes	Borehole diameter		Borehole centre diameter		Flange inside diameter	Flange outside diameter	Price
				mm DIN	mm (in.) ANSI	mm DIN	mm (in.) ANSI			
mm (in.)	bar	mm (in.)	ud	d1	d2	K1	K2	d5	D	€
		N								
25 (1)	25	20 (0.79)	4	14	16 (5/8)	85	79 (3.1)	38 (1.5)	115 (4.5)	9,5
32 (1 ¼)	25	20 (0.79)	4	18	16 (5/8)	100	89 (3.5)	46 (1.8)	140 (5.5)	11,5
40 (1 ½)	25	20 (0.79)	4	18	16 (5/8)	110	98 (3.9)	53 (2)	150 (5.9)	13,1
50 (2)	25	20 (0.79)	4	18	19 (¾)	125	121 (4.8)	65 (2.5)	165 (6.5)	15,0
65 (2 ½)	16	20 (0.79)	4	18	19 (¾)	145	140 (5.5)	81 (3.2)	185 (7.3)	16,9
80 (3)	16	20 (0.79)	8	18	19 (¾)	160	152 (6)	94 (3.7)	200 (7.9)	20,5
100 (4)	10	24 (0.95)	8	18	19 (¾)	180	191 (7.5)	120 (4.7)	229 (9)	30
125 (5)	10	24 (0.95)	8	18	22 (7/8)	210	216 (8.5)	145 (5.7)	250 (9.8)	33,4
150 (6)	10	24 (0.95)	8	22	22 (7/8)	240	241 (9.5)	174 (6.85)	285 (11.2)	41,4
200 (8)	10	24 (0.95)	8	22	22 (7/8)	295	298 (11.7)	226 (8.9)	340 (13.4)	54,5
250 (10)	6	24 (0.95)	12	22	25 (1)	350	362 (14.2)	281 (11)	406 (16)	76
300 (12)	6	24 (0.95)	12	22	25 (1)	400	432 (17)	333 (13.1)	483 (19)	109,7
350 (14)	1	24 (0.95)	16	22	28 (1 1/8)	460	476 (18.7)	365 (14.4)	533 (21)	122,9
400 (16)	1	24 (0.95)	16	26	28 (1 1/8)	515	540 (21.3)	416 (16.4)	597 (23.5)	151,9
450 (18)	1	24 (0.95)	20	26	32 (1 ¼)	565	578 (22.8)	467 (18.4)	635 (25)	170,6
500 (20)	1	24 (0.95)	20	26	32 (1 ¼)	620	635 (25)	519 (20.4)	698 (27.5)	202,9
600 (24)	1	24 (0.95)	20	30	35 (1 3/8)	725	749 (29.5)	622 (24.5)	812 (32)	266,6



Loose flanges

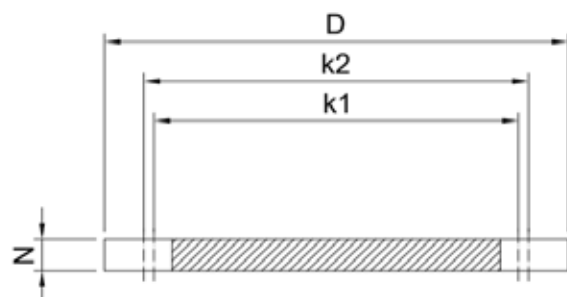
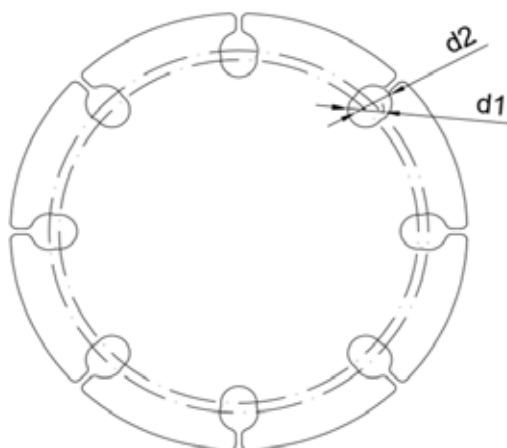
PN10

GRP LOOSE FLANGES FOR FLANGES COVERS SOCKETS AND END PLATES										
DN	Pressure	Thick-ness	n° boreholes	Borehole diameter		Borehole centre diameter		Flange inside diameter	Flange out-side diame-ter	Price
mm (in.)	bar	mm (in.)	ud	mm DIN	mm (in.) ANSI	mm DIN	mm (in.) ANSI	mm (in.)	mm (in.)	€
		N		d1	d2	K1	K2	d5	D	
GRP LOOSE FLANGES FOR FLANGES COVERS SOCKET/TESTA DIN/ANSI										
20 (1 ¼)	25	20 (0.79)	4	14	16 (5/8)	75	70 (2.8)	34 (1.4)	105 (4.1)	8,7
25 (1)	25	20 (0.79)	4	14	16 (5/8)	85	79 (3.1)	42 (1.7)	115 (4.5)	9,5
32 (1 ¼)	25	20 (0.79)	4	18	16 (5/8)	100	89 (3.5)	52 (2)	140 (5.5)	11,5
40 (1 ½)	25	20 (0.79)	4	18	16 (5/8)	110	98 (3.9)	63 (2.5)	150 (5.9)	13,1
50 (2)	25	20 (0.79)	4	18	19 (¾)	125	121 (4.8)	79 (3.1)	165 (6.5)	15
65 (2 ½)	16	20 (0.79)	4	18	19 (¾)	145	140 (5.5)	93 (3.7)	185 (7.3)	16,9
80 (3)	16	20 (0.79)	8	18	19 (¾)	160	152 (6)	111 (4.4)	200 (7.9)	20,5
GRP LOOSE FLANGES FOR FLANGES COVERS SOCKET DIN/ANSI										
100 (4)	10	24 (0.95)	8	18	19 (¾)	180	191 (7.5)	134 (5.3)	229 (9)	30
125 (5)	10	24 (0.95)	8	18	22 (7/8)	210	216 (8.5)	167 (6.6)	250 (9.8)	33,4
150 (6)	10	24 (0.95)	8	22	22 (7/8)	240	241 (9.5)	190 (7.5)	285 (11.2)	41,4
200 (8)	10	24 (0.95)	8	22	22 (7/8)	295	298 (11.7)	235 (9.3)	340 (13.4)	54,5
250 (10)	6	24 (0.95)	12	22	25 (1)	350	362 (14.2)	285 (11.2)	406 (16)	76
300 (12)	6	24 (0.95)	12	22	25 (1)	400	432 (17)	348 (13.7)	483 (19)	109,7
350 (14)	1	24 (0.95)	16	22	28 (1 1/8)	460	476 (18.7)	388 (15.3)	533 (21)	122,9
400 (16)	1	24 (0.95)	16	26	28 (1 1/8)	515	540 (21.3)	438 (17.2)	597 (23.5)	151,9
450 (18)	1	24 (0.95)	20	26	32 (1 ¼)	565	578 (22.8)	489 (19.3)	635 (25)	170,6
500 (20)	1	24 (0.95)	20	26	32 (1 ¼)	620	635 (25)	540 (21.3)	698 (27.5)	202,9
GRP LOOSE FLANGES FOR FLANGES COVERSTESTA DIN/ANSI										
100 (4)	10	24 (0.95)	8	18	19 (¾)	180	191 (7.5)	129 (5.1)	229 (9)	30
125 (5)	10	24 (0.95)	8	18	22 (7/8)	210	216 (8.5)	158 (6.2)	250 (9.8)	33,4
150 (6)	10	24 (0.95)	8	22	22 (7/8)	240	241 (9.5)	178 (7)	285 (11.2)	41,4
200 (8)	10	24 (0.95)	8	22	22 (7/8)	295	298 (11.7)	235 (9.3)	340 (13.4)	54,5
250 (10)	6	24 (0.95)	12	22	25 (1)	350	362 (14.2)	288 (11.3)	406 (16)	76
300 (12)	6	24 (0.95)	12	22	25 (1)	400	432 (17)	338 (13.3)	483 (19)	109,7
350 (14)	1	24 (0.95)	16	22	28 (1 1/8)	460	476 (18.7)	377 (14.8)	533 (21)	122,9
400 (16)	1	24 (0.95)	16	26	28 (1 1/8)	515	540 (21.3)	430 (16.9)	597 (23.5)	151,9

Blind flanges

PRFV DIN/ANSI BLIND FLANGE.

DN	Pressure	Thickness	n° boreholes	Borehole diameter		Borehole centre diameter		Flange outside diameter	Price
				mm DIN	mm (in.) ANSI	mm DIN	mm (in.) ANSI		
mm (in.)	bar	mm (in.)	ud	d1	d2	k1	k2	D	€
25 (1)	6	16 (0.63)	4	14	16 (5/8)	85	79 (3.1)	115 (4.5)	8,7
32 (1 ¼)	6	16 (0.63)	4	18	16 (5/8)	100	89 (3.5)	140 (5.5)	10,3
40 (1 ½)	6	16 (0.63)	4	18	16 (5/8)	110	98 (3.9)	150 (5.9)	11,1
50 (2)	6	16 (0.63)	4	18	19 (¾)	125	121 (4.8)	165 (6.5)	12,3
65 (2 ½)	6	16 (0.63)	4	18	19 (¾)	145	140 (5.5)	185 (7.3)	14,1
80 (3)	6	16 (0.63)	8	18	19 (¾)	160	152 (6)	200 (7.9)	16,6
100 (4)	6	16 (0.63)	8	18	19 (¾)	180	191 (7.5)	229 (9)	20,3
125 (5)	1	16 (0.63)	8	18	22 (7/8)	210	216 (8.5)	250 (9.8)	23,7
150 (6)	1	16 (0.63)	8	22	22 (7/8)	240	241 (9.5)	285 (11.2)	28,1
200 (8)	1	16 (0.63)	8	22	22 (7/8)	295	298 (11.7)	340 (13.4)	36,7
250 (10)	1	16 (0.63)	12	22	25 (1)	350	362 (14.2)	406 (16)	41,4
300 (12)	1	16 (0.63)	12	22	25 (1)	400	432 (17)	483 (19)	71,1
350 (14)	1	16 (0.63)	16	22	28 (1 1/8)	460	476 (18.7)	533 (21)	83,4
400 (16)	1	16 (0.63)	16	26	28 (1 1/8)	515	540 (21.3)	597 (23.5)	100
450 (18)	1	16 (0.63)	20	26	32 (1 ¼)	565	578 (22.8)	635 (25)	105,9
500 (20)	1	16 (0.63)	20	26	32 (1 ¼)	620	635 (25)	698 (27.5)	126,5
600 (24)	1	16 (0.63)	20	30	35 (1 3/8)	725	749 (29.5)	812 (32)	184,2



Blind flanges

PN10

PRFV DIN/ANSI BLIND FLANGE.									
DN	Pressure	Thickness	n° boreholes	Borehole diameter		Borehole centre diameter		Flange outside diameter	Price
mm (in.)	bar	mm (in.)	ud	mm DIN	mm (in.) ANSI	mm DIN	mm (in.) ANSI	mm (in.)	€
				d1	d2	k1	k2	D	
25 (1)	40	20 (0.79)	4	14	16 (5/8)	85	79 (3.1)	115 (4.5)	9,5
32 (1 1/2)	40	20 (0.79)	4	18	16 (5/8)	100	89 (3.5)	140 (5.5)	11,5
40 (1 1/2)	40	20 (0.79)	4	18	16 (5/8)	110	98 (3.9)	150 (5.9)	13,1
50 (2)	40	20 (0.79)	4	18	19 (3/4)	125	121 (4.8)	165 (6.5)	15
65 (2 1/2)	16	20 (0.79)	4	18	19 (3/4)	145	140 (5.5)	185 (7.3)	7,2
80 (3)	16	20 (0.79)	8	18	19 (3/4)	160	152 (6)	200 (7.9)	20,5
100 (4)	16	20 (0.79)	8	18	19 (3/4)	180	191 (7.5)	229 (9)	29,8
125 (5)	10	24 (0.95)	8	18	22 (7/8)	210	216 (8.5)	250 (9.8)	33,4
150 (6)	10	24 (0.95)	8	22	22 (7/8)	240	241 (9.5)	285 (11.2)	41,4
200 (8)	10	24 (0.95)	8	22	22 (7/8)	295	298 (11.7)	340 (13.4)	54,5
250 (10)	6	24 (0.95)	12	22	25 (1)	350	362 (14.2)	406 (16)	76
300 (12)	6	24 (0.95)	12	22	25 (1)	400	432 (17)	483 (19)	109,7
350 (14)	6	24 (0.95)	16	22	28 (1 1/8)	460	476 (18.7)	533 (21)	122,9
400 (16)	6	24 (0.95)	16	26	28 (1 1/8)	515	540 (21.3)	597 (23.5)	151,9
450 (18)	6	24 (0.95)	20	26	32 (1 1/4)	565	578 (22.8)	635 (25)	170,6
500 (20)	6	24 (0.95)	20	26	32 (1 1/4)	620	635 (25)	698 (27.5)	202,9
600 (24)	2,5	24 (0.95)	20	30	35 (1 3/8)	725	749 (29.5)	812 (32)	266,6



Ctra. Nacional VP-3302,
Km 11, 47329, Villavaquerín,
Valladolid, Spain.



+34 983 102 215



indemat@indemat.com



www.indemat.com



INDEMAT

INVESTIGACIÓN Y DESARROLLO DE
MATERIALES TECNOLÓGICOS

